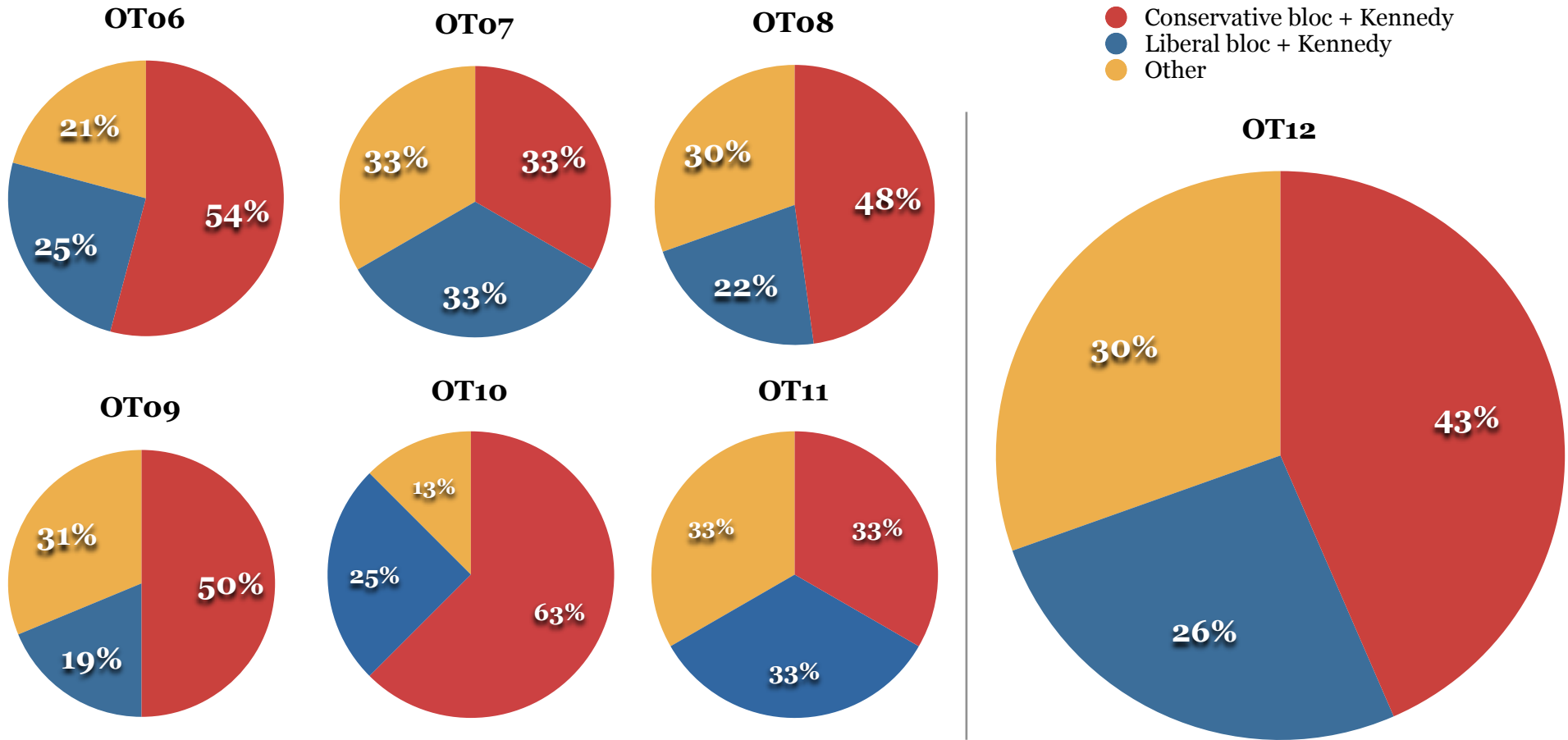
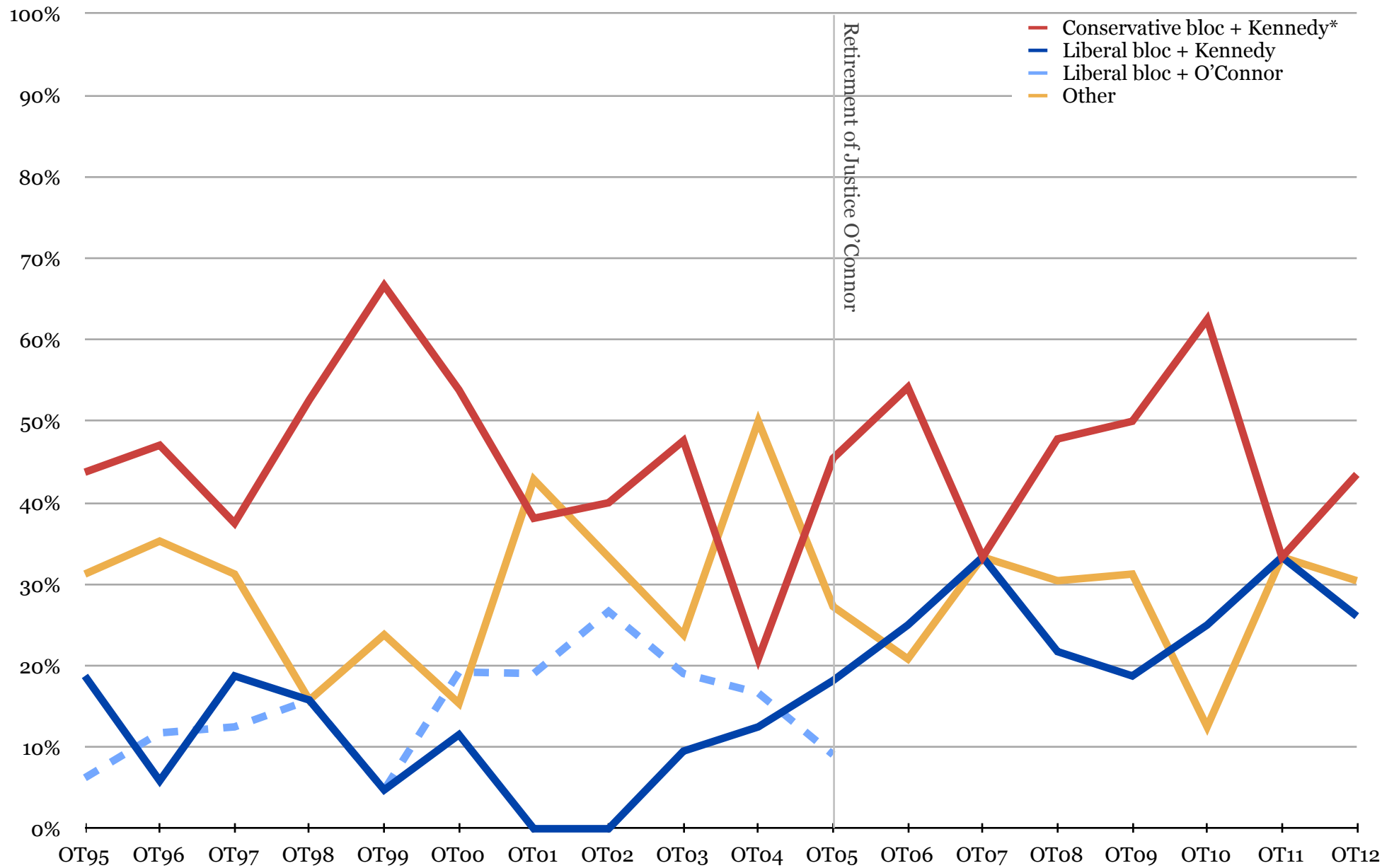


5-4 Case Majorities



*Conservative bloc = Roberts, O'Connor/Alito, Scalia and Thomas;
 Liberal bloc = Stevens/Kagan, Souter/Sotomayor, Ginsburg, Breyer.

5-4 Case Majorities



*The conservative bloc is the combination of Rehnquist/Roberts, O'Connor/Alito, Scalia and Thomas; the liberal bloc is the combination of Stevens/Kagan, Souter/Sotomayor, Ginsburg, Breyer. All other alignments of five-Justice majorities are grouped into the "other" category.