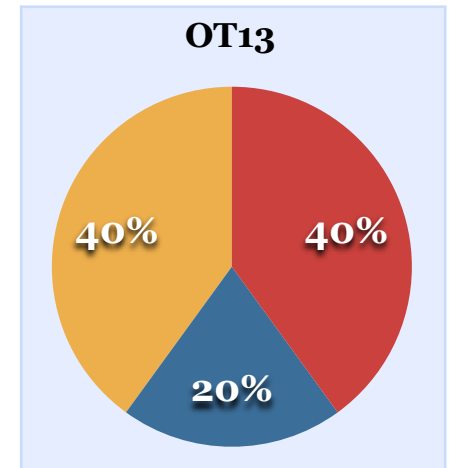
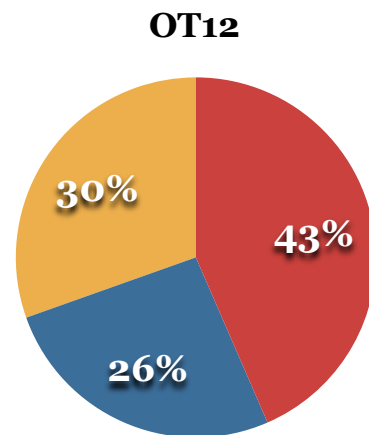
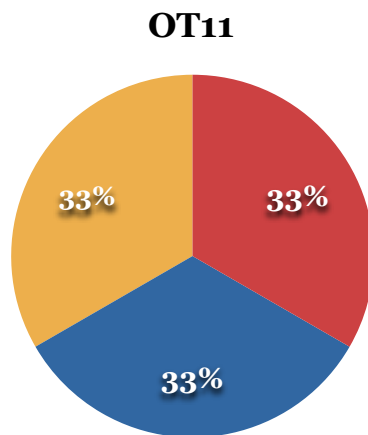
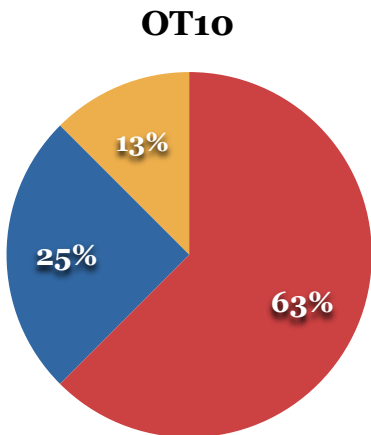
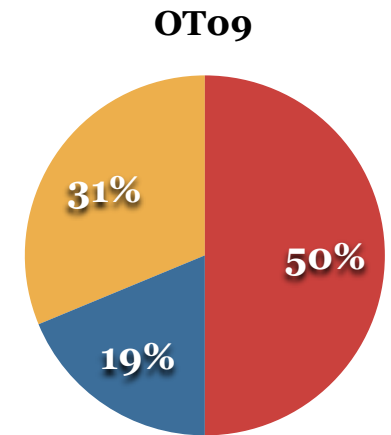
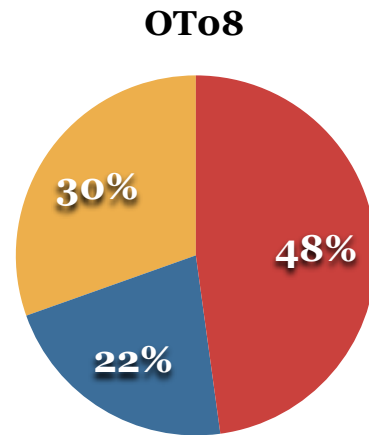
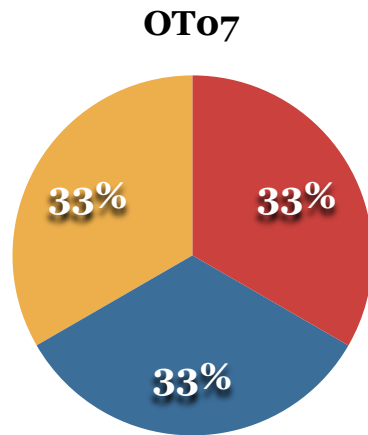
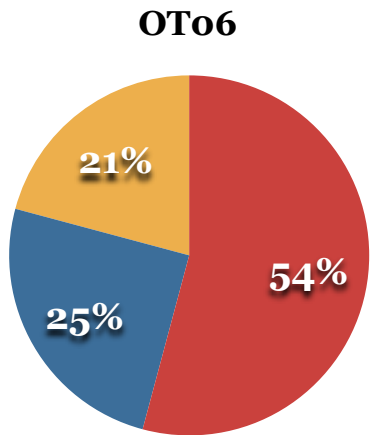


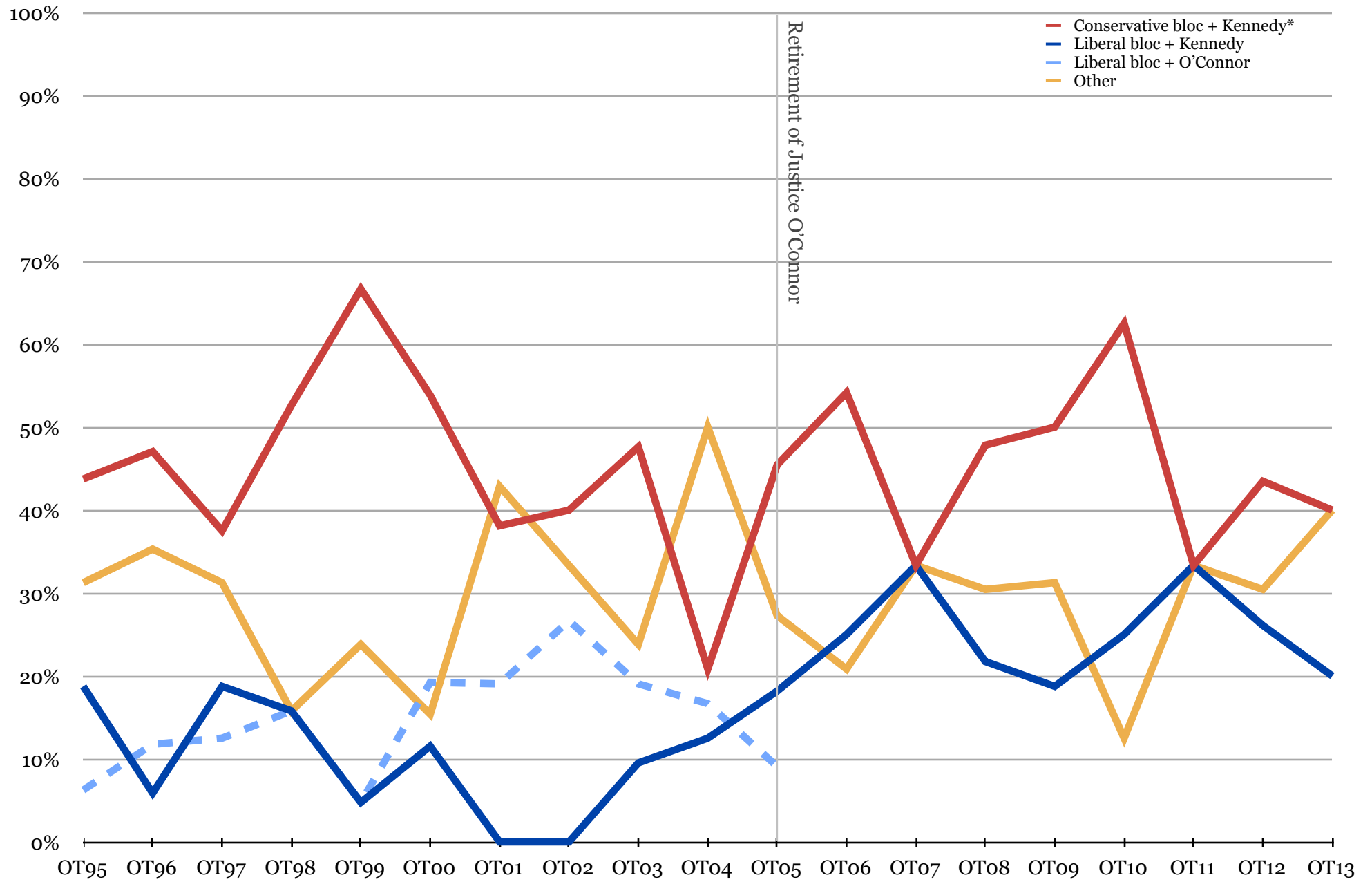
### 5-4 Case Majorities

- Conservative bloc + Kennedy
- Liberal bloc + Kennedy
- Other



\*Conservative bloc = Roberts, O'Connor/Alito, Scalia and Thomas;  
 Liberal bloc = Stevens/Kagan, Souter/Sotomayor, Ginsburg, Breyer.

### 5-4 Case Majorities



\*The conservative bloc is the combination of Rehnquist/Roberts, O'Connor/Alito, Scalia and Thomas; the liberal bloc is the combination of Stevens/Kagan, Souter/Sotomayor, Ginsburg, Breyer. All other alignments of five-Justice majorities are grouped into the "other" category.